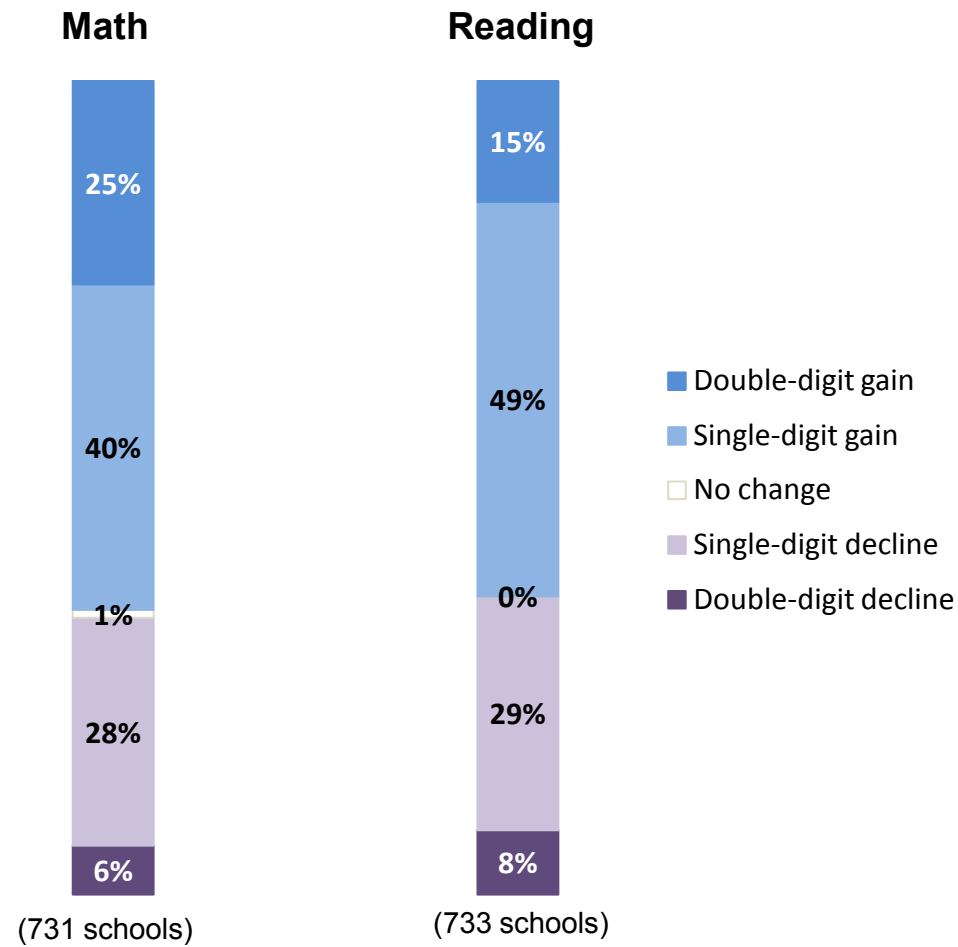


Most schools receiving School Improvement Grants are improving. The first year of data shows that two-thirds of schools showed gains in math; two-thirds gained in reading.

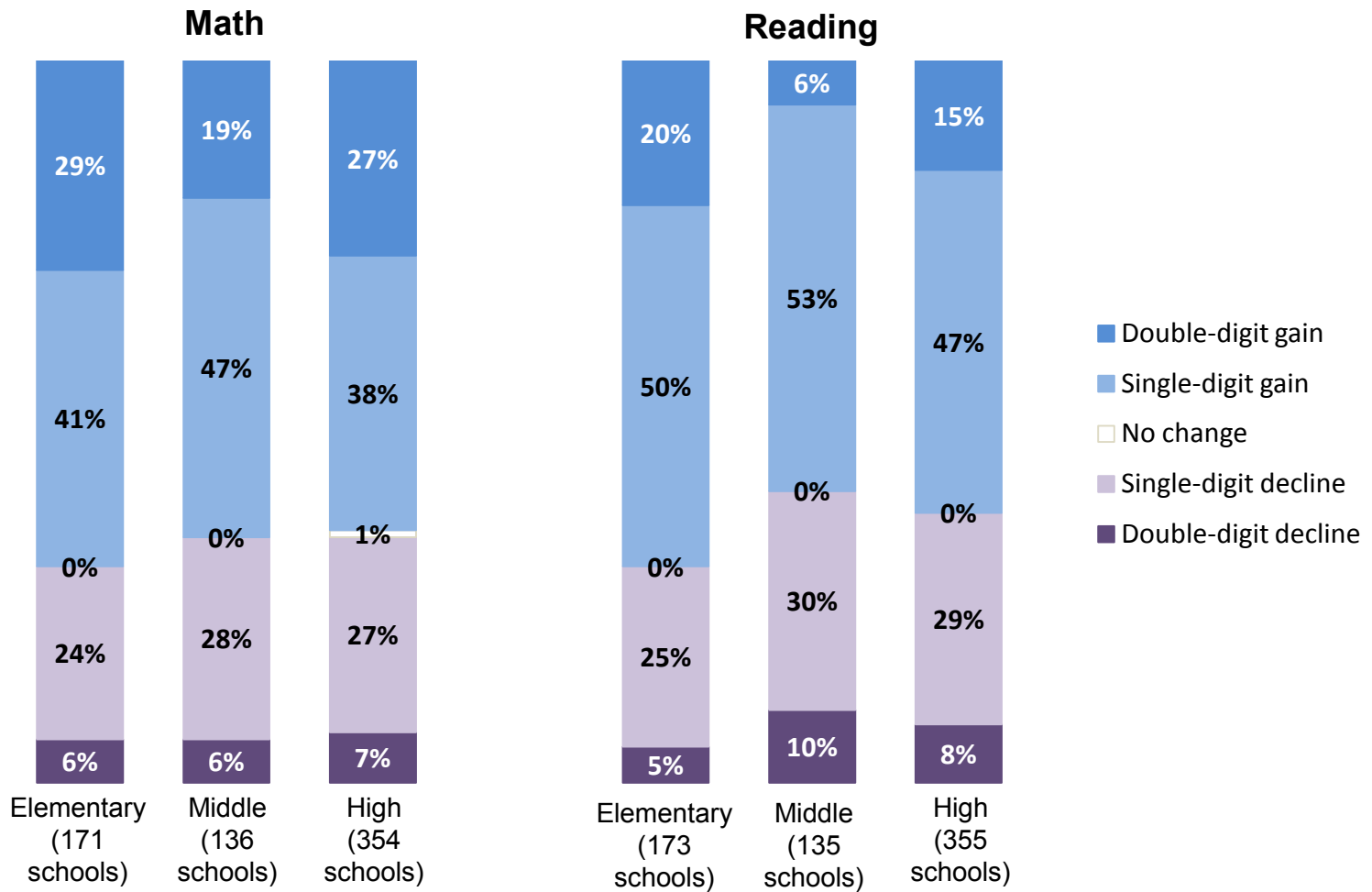
Distribution of Tier I/II SIG-Awarded Schools by Gains and Losses in Math and Reading, 2009-10 to 2010-11



Notes on data for all slides:
Total may not add to 100% due to rounding.
Data as of June 15, 2012.
Data is average of all grades assessed.

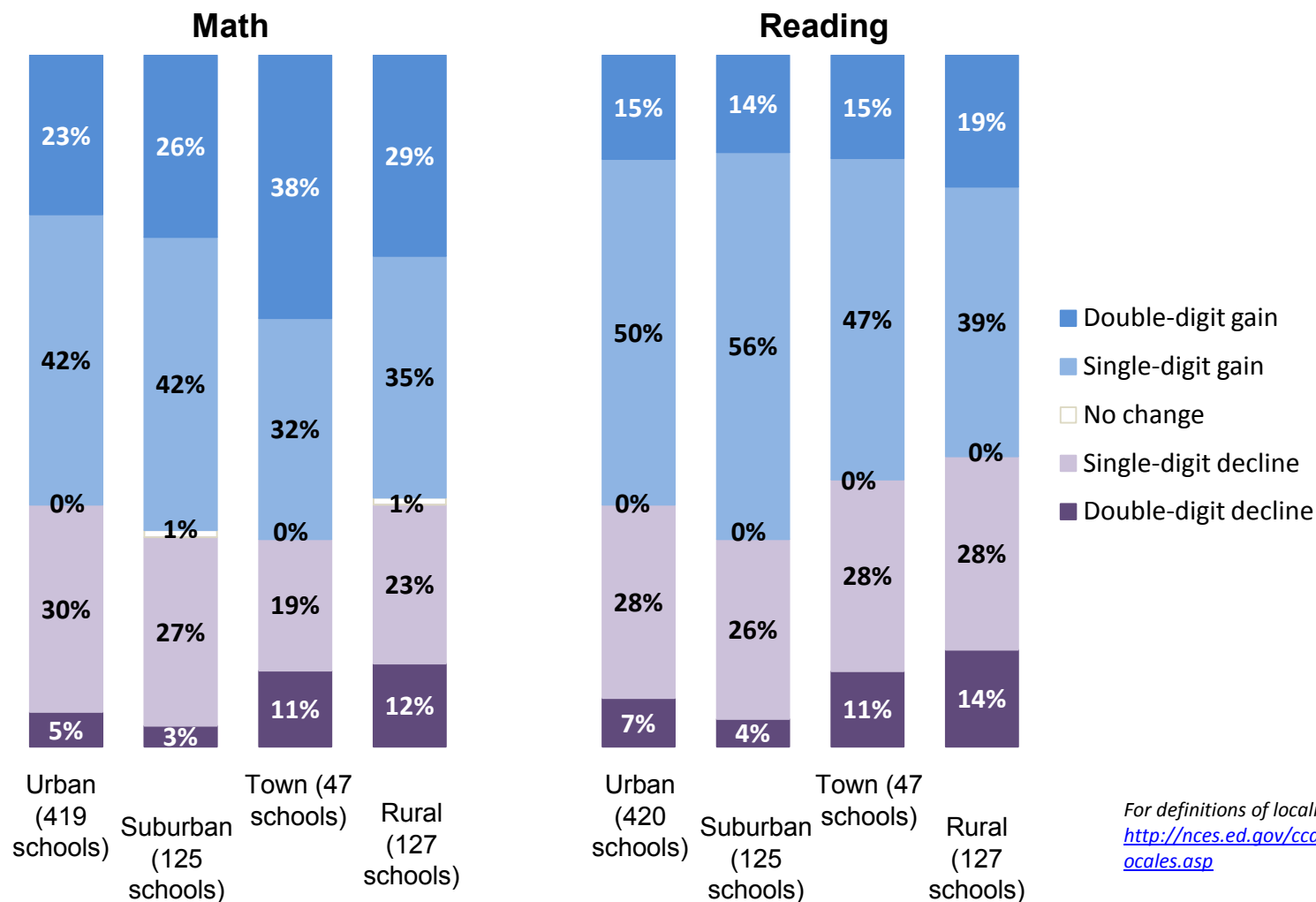
A larger percentage of elementary schools showed gains than did secondary schools.

Distribution of SIG-Awarded Tier I/II Schools by Gains and Losses in Math and Reading, by School Grade Level, 2009-10 to 2010-11



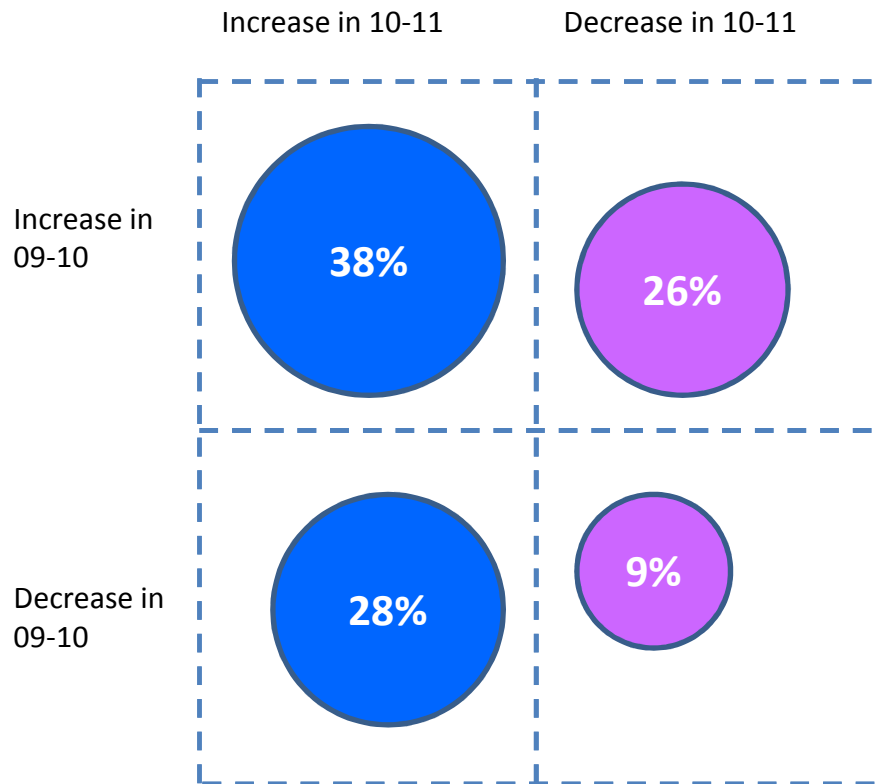
Despite concerns about capacity, SIG schools in small towns and rural areas showed similar gains to urban and suburban schools.

Distribution of SIG-Awarded Tier I/II Schools by Gains and Losses in Math and Reading, by Locale, 2009-10 to 2010-11

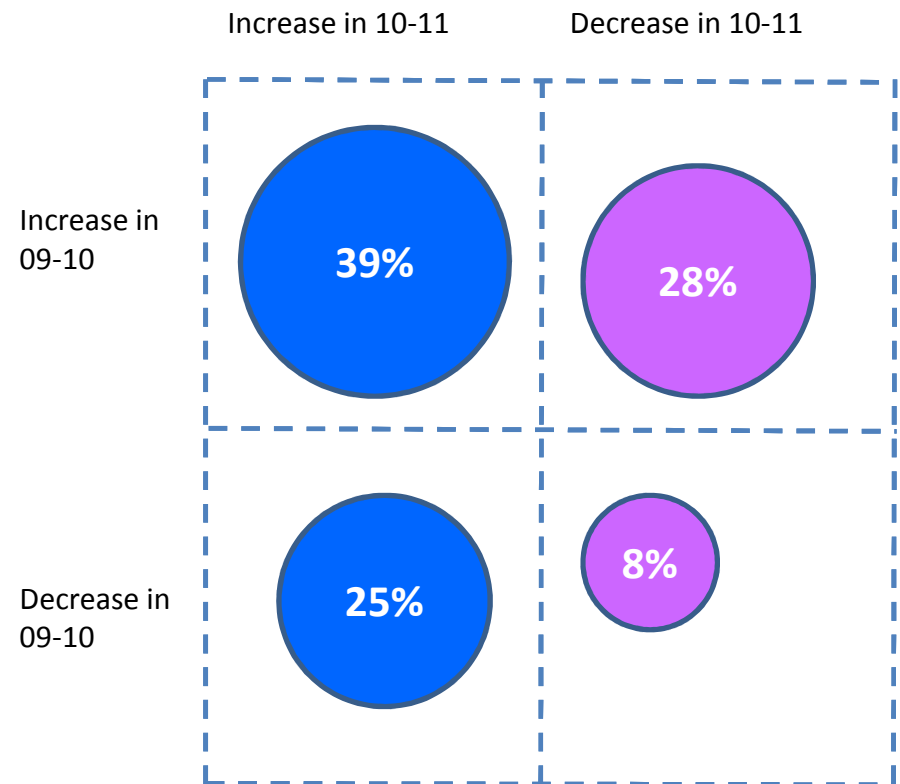


While two-thirds of schools showed gains in the first year of SIG implementation, some that improved before SIG showed declines.

Distribution of SIG Tier I/II Awarded Schools' Trajectories in Math Across Two Years



Distribution of SIG Tier I/II Awarded Schools' Trajectories in Reading Across Two Years



EXPLANATION: The circle in the upper left indicates that 38% of all SIG schools both increased their math scores before implementing SIG, and continued to show gains in the first year that SIG was implemented.