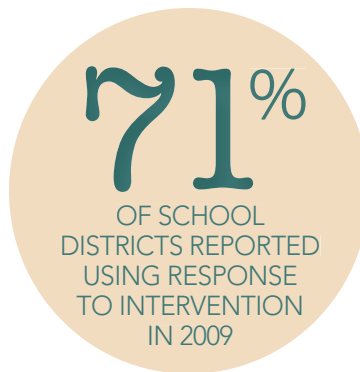
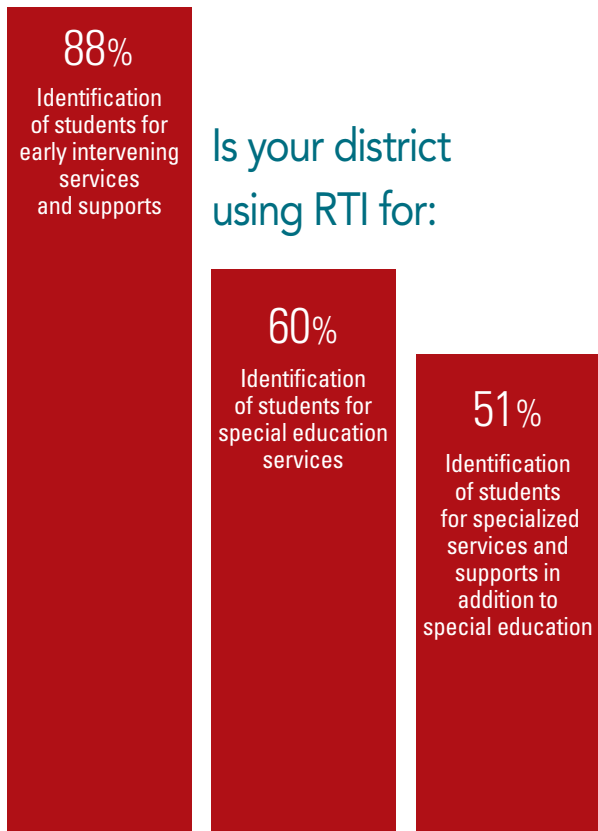
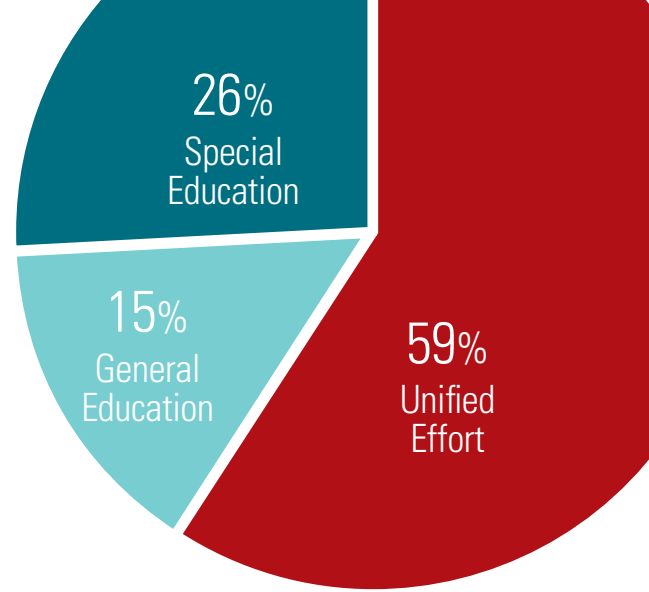


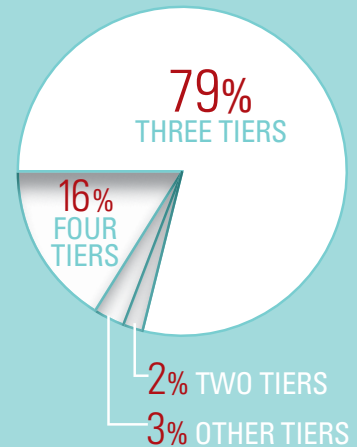
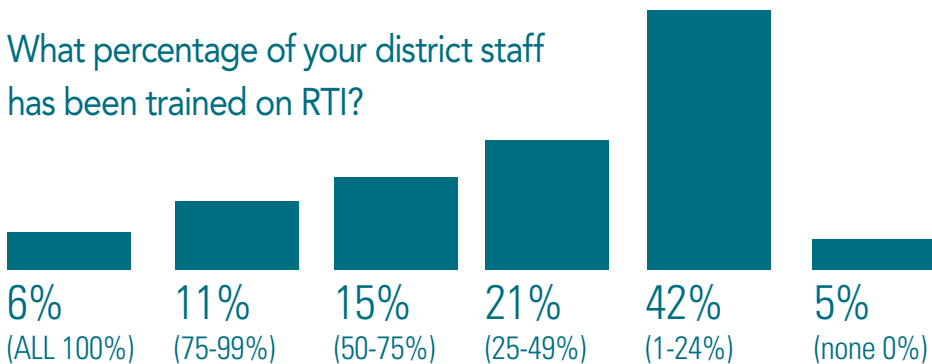
**THE RTI BOOM** According to a survey of 728 school district administrators conducted by Spectrum K12 School Solutions in collaboration with a number of education organizations, 71 percent of districts used response to intervention in 2009, a 61 percent jump since 2007. The growth in RTI implementation applied across grade levels, with the most significant jump reported in high schools. The charts below detail additional findings from the survey on the implementation of RTI in schools.



Who is leading RTI implementation in your district?

What is the maximum number of tiers you are using or planning to use in your RTI model?

What percentage of your district staff has been trained on RTI?



SOURCE: "Response to Intervention (RTI) Adoption Survey 2009," Spectrum K12 School Solutions with the Council of Administrators of Special Education, the National Association of State Directors of Special Education, and the American Association of School Administrators.