

EDUCATION WEEK

LEADERS

to Learn from

Digital Networking Guide

March 18, 2015 >> Washington, D.C.

>> Attendees



Bernard Addo

Assistant Principal
19/Vista Academy (661K)
South Ozone Park, NY



Cheryl Anderson

Industry Vice President
Apollo Education Group/
University of Phoenix
Tempe, AZ



Donna Adduci
Mik

Director of Pupil Personnel/
Special Education Programs
Meriden Public Schools
Meriden, CT



Tiffany Anderson

Superintendent of Schools
Jennings School District
Jennings, MO

2015 LEADER



Sonja Alexander

Sr. Consultant
Insight Education Group
Encino, CA



Fal Asrani

Executive Director of
Secondary Schools
Pasadena Unified
School District
Pasadena, CA



Jana Alig

Asst. Superintendent
Reynoldsburg City Schools
Reynoldsburg, OH



Pam Bahre

Board of Education Member
Meriden Public Schools
Meriden, CT

NO PHOTO
AVAILABLE



Cynthia Ambrose

Chief Academic Officer
Horry County Schools
Conway, SC



David Bain

Associate Superintendent
School District 117
Chicago, IL



Melissa Bain

Sr. Account Executive
Northwest Evaluation
Association
Lake Villa, IL



Ernestine Benedict

Chief of Communications
DC Public Schools
Washington, DC



Jamie Bakert

Strategic Account Executive
Microsoft
Baltimore, MD



2015 LEADER

Mark Benigni

Superintendent of Schools
Meriden Public Schools
Meriden, CT



Kenneth Bassett

Director of Student Learning
Prince William County Schools
Manassas, VA



Staci Bennett

Executive Director
School City of Hammond
Hammond, IN



Mark Bedell

Assistant Superintendent
of High Schools
Baltimore County
Public Schools
Towson, MD



Karen Bogan

Corporate Brand Director
ETS
Princeton, NJ



Montreal Bell

Coordinator, Early Childhood
& Remedial Programs
Fulton County Schools
Atlanta, GA



Gerry Boyd

Director of Schools
Putnam County School System
Cookeville, TN



Nicholas Brake

Superintendent
Owensboro Independent
Schools
Owensboro, KY



Knicole Brown

Sr. Prof Services Consultant
Houghton Mifflin Harcourt
Boston, MA



ALUMNI LEADER

Jonathan Brice

Sr. Director,
Chief Executive Officer
DeBruce Foundation
Baltimore, MD



Mary Brown

Account Executive
Houghton Mifflin Harcourt
Austin, TX



David Britten

Superintendent
Godfrey-Lee Public Schools
Wyoming, MI



David Browne

Superintendent
Randolph Township
Randolph, NJ



ALUMNI LEADER

Michele Brooks

Assistant Superintendent
Boston Public Schools
Boston, MA



NO PHOTO
AVAILABLE

Monica Browne

Superintendent
Upper Saddle River
Upper Saddle River, NJ



NO PHOTO
AVAILABLE

Emma Brown

Reporter
Washington Post
Washington, DC



*Catherine
Brozowski*

Vice President
Orfalea Foundation
Santa Barbara, CA



Dia Bryant
Principal
19/Vista Academy (661K)
South Ozone Park, NY



2015 LEADER

Richard Carranza
Superintendent
San Francisco Unified
School District
San Francisco, CA



Teresa Burke
Director, Business
Development
PBS
Arlington, VA



Joseph Catania
District Instructional
Tech Specialist
Newburgh Enlarged
City School District
Newburgh, NY



Velma Burse
Interim Principal
Jennings School District
Jennings, MO



Anthony Cavanna
Assistant Superintendent
Paterson Public Schools
Tarrytown, NY



Brady Busby
Field Director of Sales
Houghton Mifflin Harcourt
Austin, TX



Jennifer Cedeno
Interim Assistant
Superintendent for
Teaching and Learning
Elizabeth Board of Education
Elizabeth, NJ



*Kim Carbone-
Pandiani*
Board of Education Member
Meriden Public Schools
Meriden, CT



Paul Changas
Executive Director, Research
Metro Nashville Public Schools
Nashville, TN



2015 LEADER

Christopher P. Chatmon

Executive Director, Office of African-American Male Achievement
Oakland Unified School District
Oakland, CA



Kelly Coash-Johnson

Executive Director
American Association of School Personnel Administrators
Overland Park, KS



Murali Cherat

Global Head – Corporate Strategy
Digital Future of Education
Bangalore, India



Audrey Cohan

Professor
Molloy College
Syosset, NY



Wendy Chi

Analyst, Assessment & Research
Jefferson County Public Schools
Golden, CO



Robert Cohen

Consultant
Examperformance.com
Los Angeles, CA



Nicole Chilla

Deputy Executive Director, Office of Curriculum, Instruction and Professional Learning
New York City Department of Education
New York, NY



Beth Colby

Sr. Associate, Innovation Lab Network
Council of Chief State School Officers
Washington, DC



2015 LEADER

Linda Clark

Superintendent
West Ada School District
Meridian, ID



Chris Collins

Principal
Longmeadow Public Schools
Longmeadow, MA



ALUMNI LEADER

Dennis Creedon

Deputy Chief
Academic Officer
School District of Philadelphia
Philadelphia, PA



ALUMNI LEADER

Dennis Dupree

Superintendent
Clarksdale Municipal
School District
Clarksdale, MS



Donna Dalton

Chief Academic Officer
Chesterfield County
Public Schools
Richmond, VA



NO PHOTO
AVAILABLE

*Barbara Eason-
Watkins*

Superintendent
Michigan City Area Schools
Michigan City, IN



Beverly DeCuir

Director of Education Services
Thesys International
Anaheim, CA



NO PHOTO
AVAILABLE

Kimberly Eddings

Professional Development
Coordinator
Friendship Public
Charter School
Washington, DC



NO PHOTO
AVAILABLE

*Christopher
Diluro*

Dir. Finance & Administration
Portsmouth School
Department
Portsmouth, RI



NO PHOTO
AVAILABLE

Mark Elgart

President/CEO
AdvancED
Alpharetta, GA



NO PHOTO
AVAILABLE

Linda DuBois

Vice President of
Strategic Relationships
Curriculum Associates
North Billerica, MA



NO PHOTO
AVAILABLE

Alyse Erman

Director of Implementation
New York City Department
of Education
New York, NY



Eric Exline
 Director of Community Relations
 West Ada School District
 Meridian, ID



Lauri Francis
 LPP Learning Facilitator
 New York City Department of Education
 New York, NY



Alan Fegley
 Superintendent
 Phoenixville Area School District
 Phoenixville, PA



Dennis Frye
 Executive Director,
 Technology & CTE
 Alamance-Burlington School System
 Burlington, NC



Lise Middleton Foran
 Project Director
 Anne Arundel County Public Schools
 Glen Burnie, MD



Kelley Gangi
 Director
 Teaching and Learning Alliance
 Holden, MA



Mary Forde
 Director PPS
 Greenwich Public Schools
 Greenwich, CT



Josh Garcia
 Deputy Superintendent
 Tacoma Public Schools
 Tacoma, WA

2015 LEADER



Kathy Fortino
 Associate Superintendent for Special Education and Early Childhood
 Muskegon Area Intermediate School District
 Muskegon, MI



Kayla Gatalica
 Partner Development Manager
 First Book
 Washington, DC

2015 LEADER



Robert Gephart
 CEO & President
 Monarch Teaching
 Technologies, Inc.
 Cleveland, OH



Christopher Goodson
 SVP Services
 Houghton Mifflin Harcourt
 Boston, MA



Thomas Giard
 Assistant Superintendent for
 Personnel/Staff Development
 Meriden Public Schools
 Meriden, CT



Cheryl Green
 Managing Director
 Insight Education Group
 Encino, CA



Jay Goldman
 Editor
 School Administrator
 Magazine
 Alexandria, VA



Errick Greene
 Managing Director
 Insight Education Group
 Encino, CA



Donald Goncalves
 Assistant Board Secretary
 Elizabeth Board of Education
 Elizabeth, NJ



Terry Grier
 Superintendent
 Houston Independent
 School District
 Houston, TX



Nancy Goodman
 Managing Director
 Insight Education Group
 Encino, CA

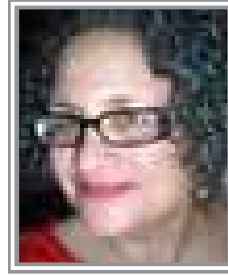


Michael Grove
 Assistant Superintendent
 for Finance/Administration
 Meriden Public Schools
 Meriden, CT



Dylan Gruver

Director of Human Resources
Friendship Public
Charter School
Washington DC, DC



Melanie Hammer

Dean, Arts & Humanities
Nassau Community College
Garden City, NY



Karen Guthro

Resource Teacher
Special Education
Montgomery County
Public Schools
Germantown, MD



Patty Hanrahan

Asst. Superintendent
Englewood Schools
Englewood, CO



2015 LEADER

Don Haddad

Superintendent
St. Vrain Valley Schools
Longmont, CO



Donna Hargens

Superintendent
Jefferson County
Public Schools
Louisville, KY



Barbara Haeffner

Director of Curriculum/
Instructional Technology
Meriden Public Schools
Meriden, CT



Hank Harris

Executive Director
Human Capital Enterprises
Washington, DC



Rose Hall

Support Staff
Broward County Schools
Coral Springs, FL



Cyrus Hekmat

CEO and Founder
Examperformance.com
Los Angeles, CA



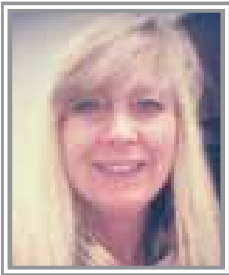
Chad Hensley

Director of Elementary Instruction
Shenandoah County Public School
Woodstock, VA



David Hinegardner

Director of Middle & Secondary Instruction
Shenandoah County Public Schools
Woodstock, VA



Stacy Henson

Coordinator for Early Learning/TIF Grant Manager
Washington County Public Schools
Hagerstown, MD



Glen Hoffmann

Director
Regional Alternative School / Regional Office of Education #17
Bloomington, IL



Clara Hess

Chief Operating Officer
DC Public Charter School Board
Washington, DC



Olga Hugelmeyer

Superintendent of Schools
Elizabeth Board of Education
Elizabeth, NJ



ALUMNI LEADER

Linda Hicks

Superintendent
Battle Creek Public Schools
Battle Creek, MI



Janet Immink

Account Executive
Microsoft
Malvern, PA



ALUMNI LEADER

Tracy Hill

Executive Director
Cleveland Metropolitan School District
Cleveland, OH

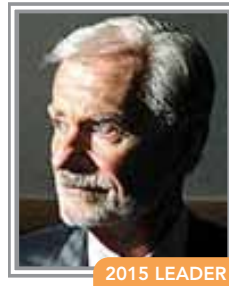


Tayo Jackson

Technology Strategist
Microsoft
Baltimore, MD

NO PHOTO
AVAILABLE

Laura James
Associate Vice President,
Academic and Student
Affairs Operations
Georgia Gwinnett College
Lawrenceville, GA



William Johnson
Superintendent of Schools
Rockville Centre UFSD
Rockville Centre, NY



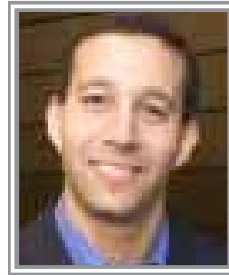
*Harriet
Gaworowski*
Associate Superintendent
Rock Hill Schools
Rock Hill, SC

NO PHOTO
AVAILABLE

Michael Kasloff
Regional Vice President
Amplify Education
Maplewood, NJ

NO PHOTO
AVAILABLE

*Patrick
Jean-Pierre*
Director
NYU-TAC-D
New York, NY



Daniel Kaufman
School Board Member
Prince George's County
Public Schools
Bowie, MD



Samir Joglekar
Executive Vice
President of Sales
Renaissance Learning
Wisconsin Rapids, WI

NO PHOTO
AVAILABLE

Bill Kearney
Deputy Chief,
Males of Color Initiative
DCPS
Washington, DC



Shawn Johnson
Director of K-8
Curriculum Programs
Duplin County Schools
Kenansville, NC

NO PHOTO
AVAILABLE

Susan Kell
Instructional Advisor
for Library Media
West Shore School District
York Haven, PA



Thomas Kenworthy

Assistant Superintendent
Portsmouth School
Department
Portsmouth, RI



Angelique Kobler

Assistant Superintendent
Lawrence Public Schools
Lawrence, KS



Joseph Kitchen

Director
Washington School for Girls
Washington, DC



Luanne Kokolis

Assoc. Superintendent
Rock Hill Schools
Rock Hill, SC



Jo Ann Kitchen-Simmons

School Counselor
Broward Public Schools
Fort Lauderdale, FL



Michael Kuchar

Superintendent
Bergenfield Public Schools
Bergenfield, NJ



Scott Kizner

Superintendent of Schools
Harrisonburg City
Public Schools
Harrisonburg, VA



Troy Laraviere

Principal
Chicago Public School/
Blaine Elementary
Chicago, IL



Allyson Knox

Director of Education
Policy Programs
Microsoft Corporation
Washington, DC



Joshua Leake-Campbell

Sr. Client Coordinator
National Student
Clearinghouse
Herndon, VA



Charles Ledbetter

Superintendent
Dublin City Schools
Dublin, GA



Amy Liszt

Director of Strategic
Engagement
UChicago Impact,
University of Chicago
Chicago, IL



Valya Lee

Superintendent of Schools
Liberty County School System
Hinesville, GA



Shannon Litton

Government Relations
Manager
Educational Testing Service
Washington, DC



Barbara Leeds

Assistant Superintendent
West Ada School District
Meridian, ID



Christopher Lohse

Vice President
Government Affairs
Renaissance Learning, Inc.
Wisconsin Rapids, WI



Martha Lehman

Coordinator of
Specialized Instruction
Anne Arundel County
Public Schools
Annapolis, MD



Lazaro Lopez

Associate Superintendent
High School District 214
Arlington Heights, IL



Michael Lin

Superintendent
Corona-Norco Unified
School District
Norco, CA



Bill Macdonald

Instructional Improvement
Specialist
Jennings School District
Jennings, MO

2015 LEADER



Heather MacGillivray

Director of Assessment & Research
Jefferson County Public Schools
Golden, CO



Hillary Michaels

Director, Education Research and Evaluation
HumRRO
Alexandria, VA



Cynthia Maldonado

Executive Director
Vida Charter School
Gettysburg, PA



Blair Milam

Managing Director of K-12
Hanover Research
Arlington, VA



Aurora Martinez

Executive Director
Curriculum Associates
North Billerica, MA



Ryan Miller

Schools Development Manager
Cambridge International Examinations
New York, NY



Joan Mast

Assistant Superintendent
Scotch Plains-Fanwood Public Schools
Scotch Plains, NJ



Michael Moody

CEO/Co-Founder
Insight Education Group
Encino, CA



Shawna Medeiros

Division Director
Kamehameha Schools
Honolulu, HI



Miriam Morales Taylor

Interim Superintendent of Schools
New London Public Schools
New London, CT



Tonya Muro

Director of School Outreach
and Educational Partnerships
AFS-USA
New York, NY



Paul Naughton

Manager Professional Services
Houghton Mifflin Harcourt
Boston, MA



Patrick Murphy

Superintendent
Arlington Public Schools
Arlington, VA



Paula Newbaker

Media and Public Relations
Specialist
National Student
Clearinghouse
Herndon, VA



Linda Muskauski

Knowledge Development
Director
Talent Development Secondary/
Johns Hopkins University
Baltimore, MD



*Marcus
Newsome*

Superintendent
Chesterfield County
Public Schools
Chesterfield, VA



Larry Mussoline

Superintendent
Downiognntown Area
School District
Downtown, PA



*Chau Ngo
Rayman*

Sr. Director
New York City Department
of Education
Brooklyn, NY



James Mylen

Sr. Vice President
Amplify
Fairfield, CT



Gary Norcross

Assistant Principal
Chicago Public School/
Blaine Elementary
Chicago, IL



Richard Nyankori

Executive Vice President
Insight Education Group
Encino, CA



Dr. Roberto Padilla

Superintendent of Schools
Newburgh Enlarged
City School District
Newburgh, NY



Jill Nyhus

Vice President of
Business Development
Insight Education Group
Encino, CA



Regina Palubinsky

Assistant Superintendent
Phoenixville Area
School District
Phoenixville, PA



Sarah Oatsvall

Assistant Director—
Teaching & Learning
Lawrence Public Schools
Lawrence, KS



Terry Patton

Principal
Baltimore City Public Schools
Baltimore, MD



ALUMNI LEADER

Austin Obasohan

Superintendent
Duplin County Schools
Kenansville, NC



Meaghan Pavlovich

Director of Field Services
Houghton Mifflin Harcourt
Boston, MA



Paula O'Gorman

Sr. Vice President
Government Affairs
Renaissance Learning, Inc.
White Salmon, WA



Bobbi Pedrick

Director of Special Education
Anne Arundel County
Public Schools
Annapolis, MD



Brian Pick

Chief of Teaching and Learning
District of Columbia
Public Schools
Washington, DC



Cary Powers

Chief Officer for Federal
Programs/Operations
Duplin County Schools
Kenansville, NC



Eric Pitcher

Director of Technology
Joplin Schools
Joplin, MO



Shannon Pugh

Manager of Assessments
Anne Arundel County
Glen Burnie, MD



ALUMNI LEADER

*Jeffrey
Platenberg*

Assistant Superintendent
Fairfax County Public Schools
Falls Church, VA



Michelle Publick

Executive Director of
Curriculum & Instruction
Hartford Public Schools
Hartford, CT



Amy Plect-Odle

Inclusion Consultant
U of Del/ Inclusion
Focused Coaching
Elkton, DE



Charles Pulliam

Chief Development Officer
Life School of Dallas
Lancaster, TX



Jennifer Poon

Director, Innovation
Lab Network
Council of Chief State
School Officers
Washington, DC



David Quanbeck

Chair of Board of Directors
Middleburg Community
Charter School
Middleburg, VA



Felix Quinones

Digital Learning Resident
Achievement First
New Haven, CT



Ana Riley

Superintendent
Portsmouth School
Department
Portsmouth, RI



*Tanji Reed
Marshall*

Consultant
Liaison Educational
Partners, LLC
Matthews, NC



Patrick Riley

Cognitive Coach
Green River Regional
Educational Cooperative
Owensboro, KY



Sharon Ren

CFO & Vice President
of Operations
Insight Education Group
Encino, CA



Vicki Riley

Independent Consultant
Kentucky Association for
School Administrators
Owensboro, KY



*Michael F.
Rice, Ph.D.*

Superintendent
Kalamazoo Public Schools
Kalamazoo, MI



June Rimmer

Associate Director
Center for Educational
Leadership, University
of Washington
Seattle, WA



Carol Rickert

Sales Director
Apex Learning
Seattle, WA



*Anthony
Robinson*

Director of Secondary
Education
Jennings School District
Jennings, MO

NO PHOTO
AVAILABLE

Jeffrey Robinson

Principals Network Manager
Talent Development
Secondary/Johns
Hopkins University
Baltimore, MD



Kay Sammons

Coordinator of Elementary
Mathematics
Howard County Public Schools
Ellicott City, MD



ALUMNI LEADER

Mary Ronan

Superintendent
Cincinnati Public Schools
Cincinnati, OH



Ed Samuels

Assistant Director
Long Beach Unified
School District
Long Beach, CA

NO PHOTO
AVAILABLE

Margo Ross

Sr. Director of Development
Center for Supportive Schools
Princeton, NJ

NO PHOTO
AVAILABLE

Dwight Sanders

U.S. Federal Marshals
U.S. Department of State
Cincinnati, OH

NO PHOTO
AVAILABLE

Terrance Ross

Reporter
The Atlantic
Washington, DC



2015 LEADER

Lenny Schad

Chief Information
Technology Officer
Houston Independent
School District
Houston, TX



George Russell

Sr. Consultant
George Russell & Associates
Eugene, OR



Justin Schooley

Associate Superintendent
of Human Resources
Berkeley County Schools
Martinsburg, WV



Kathy Scott

Mid Atlantic Territory Manager
Learning.com
Portland, OR



Diane Smith

Instructional Superintendent
NRS Painting, Inc
Highlands Ranch, CO



Nancy Segal

Executive Director
of Government and
External Relations
Educational Testing Service
Washington, DC



Stacy Spector

Executive Director Juvenile
Court and Community Schools
San Diego County
Office of Education
San Diego, CA



Edward Sigur IV

Program Specialist
Long Beach Unified
School District
Long Beach, CA



2015 LEADER

Patricia Spradley

Chief Parent and Community
Engagement Officer
Springfield, MA. Public Schools
Springfield, MA



Stanley Simon

Vice President
Achieve 3000
New York, NY



Alison Steinfelds

Program Manager Compliance
and Legal Issues
Anne Arundel County
Public Schools
Annapolis, MD



Barb Smith

Principal
Middleburg Community
Charter School
Middleburg, VA



Christine Stenson

Director, Research
Metro Nashville Public Schools
Nashville, TN



Frank Stetson

Education Program Specialist
Maryland State
Department of Education
Burtonsville, MD



Yitaseb Tilahun

Database Assistant
Medhanealem
Addis Ababa, Ethiopia



Jeannie Stone

Assistant Superintendent-
Curriculum & Instruction
Wylie Independent
School District
Wylie, TX



2015 LEADER

Thomas Trigg

Superintendent of Schools
Blue Valley USD 229
Overland Park, KS



Hilda Surraco

Consultant
Consejo de Formación
en Educación
Montevideo, Uruguay



Valerie Truesdale

Chief Officer of Technology,
Personalization &
Engagement Services
Charlotte-Mecklenburg
Schools
Charlotte, NC



Jeanice Swift

Superintendent
Ann Arbor Public Schools
Ann Arbor, MI



Aaron Trummer

Director-Curriculum
& Instruction
Mahopac CSD
Mahopac, NY



Everette Teal

Director of Technology
Public Schools of
Robeson County
Lumberton, NC



Nader Twal

Program Administrator
Long Beach Unified
School District
Long Beach, CA



Bolgen Vargas
 Superintendent
 Rochester City School District
 Rochester, NY



Lytisha Williams
 Director of Development, NJ
 Center for Supportive Schools
 Princeton, NJ



Peter Walters
 CEO
 3P Learning Mathletics
 New York, NY



Judith Wilson
 Staff Developer
 Montgomery County
 Public Schools
 Rockville, MD



Melissa Watrous
 Regional Vice President, West
 Renaissance Learning
 Santa Cruz, CA



Sherry Wilson
 Assistant Director of
 Human Resources
 Chesapeake Public Schools
 Chesapeake, VA



Matthew Wendt
 Superintendent
 Community Unit
 School District 308
 Osweto, IL



Joni Wing
 Sales Director
 Truenorthlogic
 Sandy, UT



Deena Williams
 Director, Recruitment
 The Broad Center
 Los Angeles, CA



Jesse Winston
 Federal Programs Director
 Morehouse Parish
 School Board
 Bastrop, LA

NO PHOTO
AVAILABLE

Alia Wong

Editor/Reporter
The Atlantic
Arlington, VA



2015 LEADER

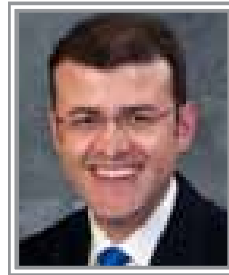
Alita Zuber

Assistant Superintendent
for Business
Ossining UFSD
Ossining, NY

NO PHOTO
AVAILABLE

Diane Workman

Assistant Superintendent
Calvert County Public Schools
Prince Frederick, MD



Fabio Zuluaga

Asst. Superintendent
Fairfax County Publix School
Falls Church, VA

NO PHOTO
AVAILABLE

Susan Yom

CIO
City School District
of New Rochelle
New Rochelle, NY