

Overcoming the Odds: Getting Every Student to College

YES Prep Public Schools Shares Its Success Story

Agenda

- Overview & Introductions
- Two Texas Public School Systems
 - Aldine Independent School District
 - YES Prep Public Schools
- College-Readiness Landscape
- Overcoming the Odds:
YES Prep Model and Best Practices
- A Unique Partnership: Aldine ISD and YES Prep

Overview and Introductions

- Overview
- Participants

Veronica Davey
The Eli and Edythe Broad Foundation

Wanda Bamberg
Superintendent, Aldine Independent School District

Jason Bernal
President, YES Prep Public Schools

Shelley Billig
Vice President, RMC Research Corporation

Wanda Bamberg

Superintendent, Aldine ISD

- Award-winning Aldine ISD Superintendent
- Master's degree in education, Alabama University
- Over 35 years as a public school educator and top administrator
- What keeps Wanda up at night:
“Ensuring that we are providing a quality education for students. I want students to leave Aldine with opportunities to pursue their dreams to attend college or any post-secondary training or to enter the work force.”



Jason Bernal

President, YES Prep Public Schools

- Appointed President of YES Prep in 2011
- Helped establish YES Prep in 1997
Has served as a teacher, school director and chief operating officer
- Master's degree in educational leadership
- What keeps Jason up at night:
“Finding, developing and retaining the people to deliver a well-rounded and world-class education to our students in order for them to be successful in life.”



Shelley Billig

Vice President, RMC Research Corp.

- Vice president, RMC Research Corp
- Ph.D., Tufts University
- 30 years experience – focus on low income families
- Leads The Broad Prize research and diagnostic teams
- Shelley's viewpoint:
“The greatest challenge for low-income students is ensuring that schools provide the learning experiences that fortify students with the drive, knowledge, skills and behaviors to succeed and graduate from college within four years.”

Agenda

- Overview & Introductions
- **Two Texas Public School Systems**
 - **Aldine Independent School District**
 - **YES Prep Public Schools**
- College-Readiness Landscape
- Overcoming the Odds:
YES Prep Model and Best Practices
- A Unique Partnership: Aldine ISD and YES Prep

Aldine Independent School District: Producing the Nation's Best

- One of more than 1,000 public school districts in Texas
- Located in Harris County, just north of Houston
- 64,900 students
 - 70% Hispanic
 - 26% African-American
 - 84% low-income
- 75 campuses
- More than 8,000 employees
- 111 square miles



YES Prep Public Schools: Redefining What's Possible

- An open-enrollment charter school network
- 11 secondary schools serving grades 6-12 in greater Houston area
- 700 employees



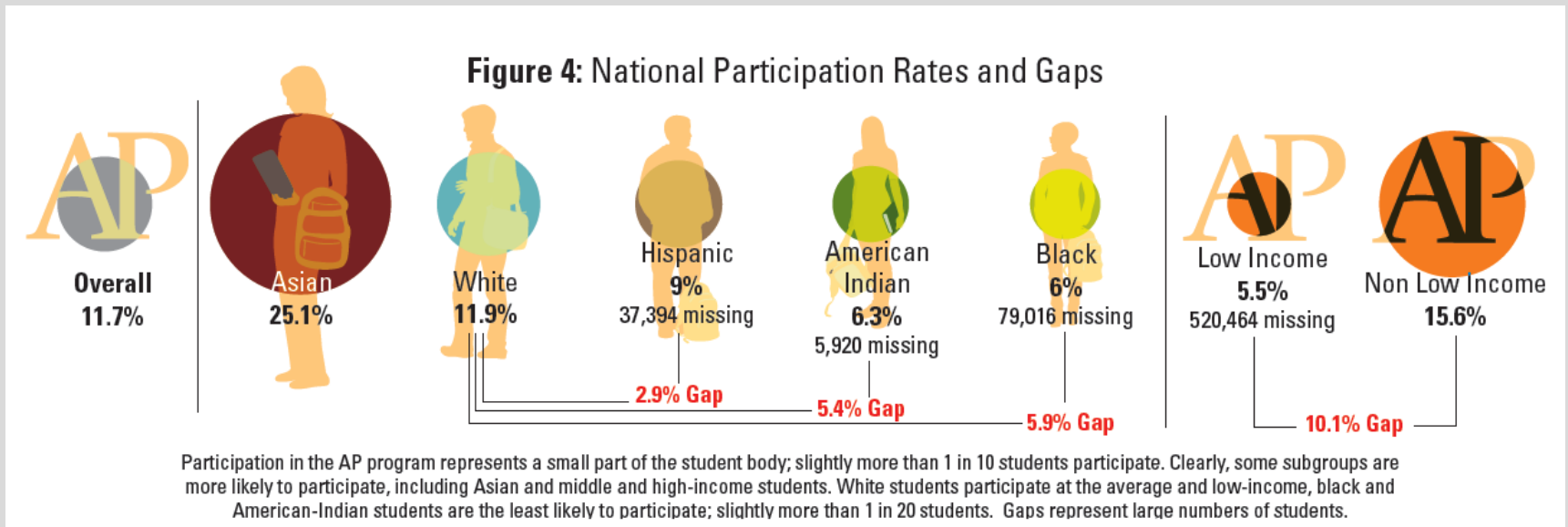
- 7,000 students enrolled
 - 95% Hispanic or African-American
 - 80% low-income
 - 90% first generation to attend college
- 7,000 students on waitlists
- 935 alumni; 72 percent still in four-year institutions

Agenda

- Overview & Introductions
- Two Texas Public School Systems
 - Aldine Independent School District
 - YES Prep Public Schools
- **College-Readiness Landscape**
- Overcoming the Odds:
YES Prep Model and Best Practices
- A Unique Partnership: Aldine ISD and YES Prep

College Readiness Landscape: National Advanced Placement Data (2010)

- 71% of all public high schools offer at least one AP class
These schools serve 91% of the public high school population
- Who's taking the exams?



Source: The Education Trust, "Finding America's Missing AP and IB Students," June 2013, www.edtrust.org.

College-Readiness Landscape

35.1%

The six-year college graduation rate for students who take remedial courses in college is 35.1 percent.

55.7%

The six-year college graduation rate for students do not need remediation in college is 55.7 percent.

Source: Complete College America, www.completecollege.org.

College-Readiness Landscape

Data Point	Nation	YES Prep
% of high school graduates who took at least one AP exam ¹	32%	97%
College enrollment rate for low-income students ²	52%	99%
% students taking remedial courses in four-year colleges ³	20%	8%

¹ National data from College Board.

² National data from National Center for Education Statistics, The Condition of Education 2013.

³ National data from Complete College America, www.completecollege.org.

College Readiness Landscape: Keys to Success

- Knowledge and Skills
- Academic Behaviors
- Habits of Mind
- Navigating the Process



Agenda

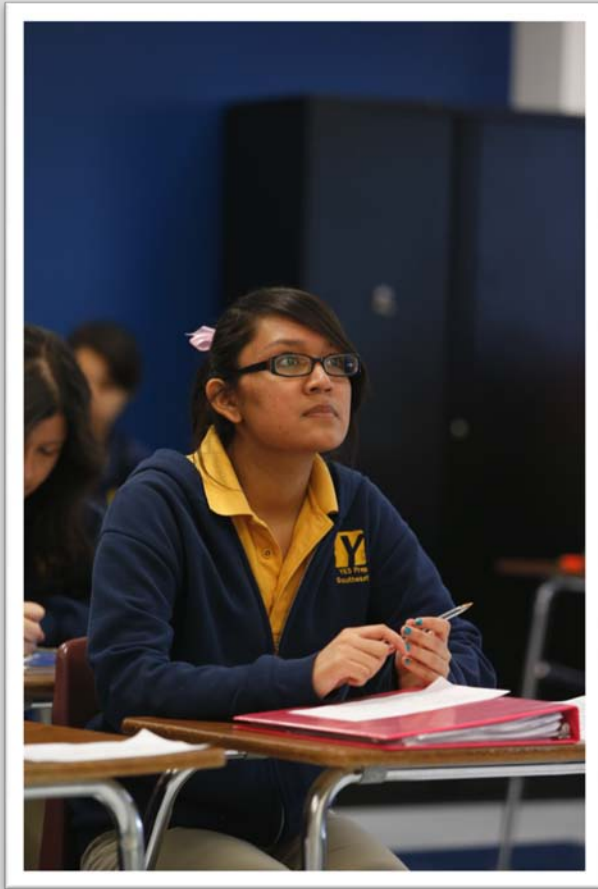
- Overview & Introductions
- Two Texas Public School Systems
 - Aldine Independent School District
 - YES Prep Public Schools
- College-Readiness Landscape
- **Overcoming the Odds:
YES Prep Model and Best Practices**
- A Unique Partnership: Aldine ISD and YES Prep

Overcoming the Odds: YES Prep Model



- Early Vision → Current Mission
- School Development
- Academic Structures
- Funding Realities
- Partnership Approach
- Future Growth

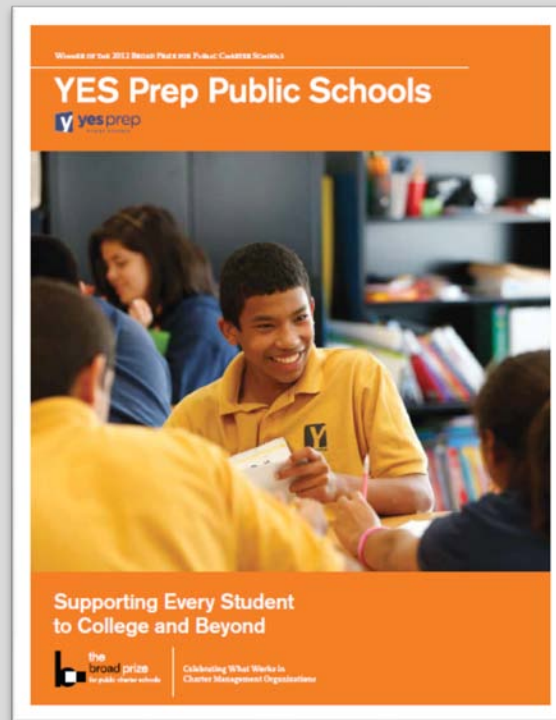
Overcoming the Odds: YES Prep Best Practices



- Curriculum
- Staffing
- College-going Culture
- Character Building
- Worldly Exposure
- Alumni Support

YES Prep Public Schools : Broad Foundation Report

www.broadprize.org/publiccharterschools/2012.html



Agenda

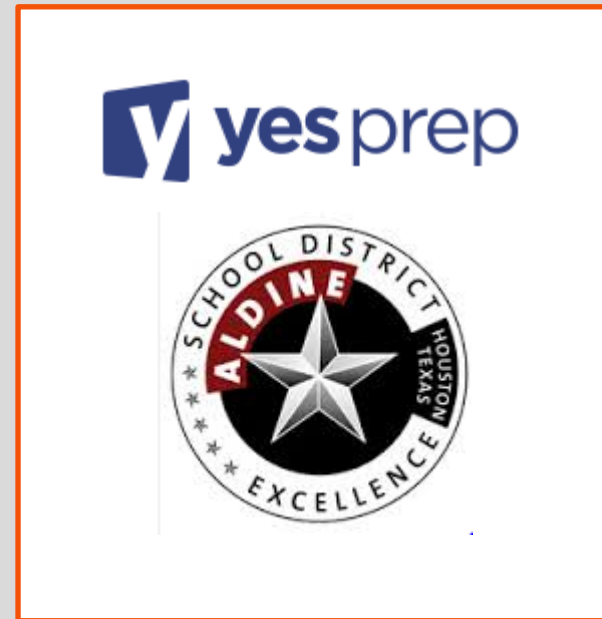
- Overview & Introductions
- Two Texas Public School Systems
 - Aldine Independent School District
 - YES Prep Public Schools
- College-Readiness Landscape
- Overcoming the Odds:
YES Prep Model and Best Practices
- **A Unique Partnership: Aldine ISD and YES Prep**

A Unique Partnership: Aldine & YES Prep

- *New YES middle school (grades 6-8)*
 - Opening July 2013
 - Starting with grade 6
 - Co-located with existing Aldine middle school (grades 7-8)
- *New YES high school (grades 9-12)*
 - Opening 2016
 - Co-location with existing Aldine high school (grades 9-12)

A Unique Partnership: Sharing Best Practices

- Immediate
 - Curriculum
 - Discipline Policies
 - Facilities
 - Student Data Collection
- Future
 - Teacher Development
 - School Operations
 - More Curriculum Integration



A Unique Partnership: YES Prep and Aldine ISD

- What are the most significant barriers to best practice sharing?
- What will the partnership look like in 10 years?
- Can the partnership survive and deepen if the leadership changes?

Audience Questions



Learn More

- YES Prep Public Schools
www.yesprep.org/vision/district-partnerships
- Aldine Independent School District
www.aldine.k12.tx.us/
- YES Prep panel at National Charter Schools Conference
www.publiccharters.org/Conference/2013/Home.aspx
- YES Prep Public Schools: Broad Foundation report
www.broadprize.org/publiccharterschools/2012.html



the
broad prize
for public charter schools